

SP21 SERIES

SELF PRIMING ANALYZER SAMPLE PUMP

Designed to meet the demanding requirements of continuous liquid sample delivery



The unique SP21 peristaltic pump operates at low speed which helps extend tubing life.

Designed to meet the demanding requirements of continuous duty liquid sampling and chemical feed systems.

The SP21 utilizes a positive displacement peristaltic pumphead with spring-loaded rollers that provide extended tubing life.

One size pumphead accommodates six tubing sizes for flexibility in flow outputs. A wide range of flow outputs can be obtained by simply changing the tubing size.

The sealed, spring-loaded pumphead rollers automatically compensate for minor variations in pump tube wall thickness.

SP21 FEATURES

- Flows from 19 to 653 ml/min (0.3 to 10.3 GPH)
- Totally enclosed NEMA TEFC gearmotor
- Seal-less pumping technology
- Self-priming - suction lifts to 30 ft.
- No check valves - few moving parts
- ABS plastic pumphead w/spring loaded rollers
- Dry run capability

The SP21 self-priming pump does not require check valves.

Liquid stays confined in the pump tubing and never contacts pump parts. Pump requires little maintenance.

High lift and a wide range of flow rates make this pump ideal for many applications.



ANALYZER SAMPLE PUMPS

FLOMOTION SP21 ENGINEERING SPECIFICATIONS

GEARMOTOR / PUMPHEAD

- 1/5 HP Continuous Duty gearmotor with oven-cured epoxy powder coat finish
- Power: 115 VAC with 10ft power cord
- ABS plastic pumphead with spring-loaded roller assembly
- Weight: 16 lbs.

TUBING

FLOPRENE™ - Thermoplastic elastomer NSF61

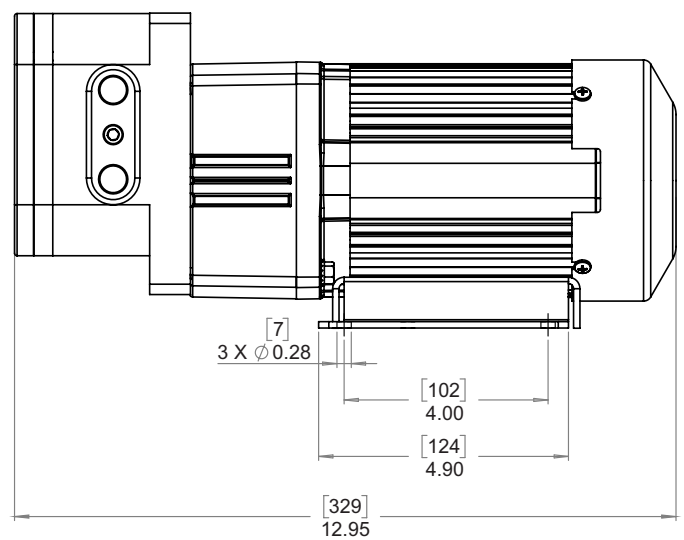
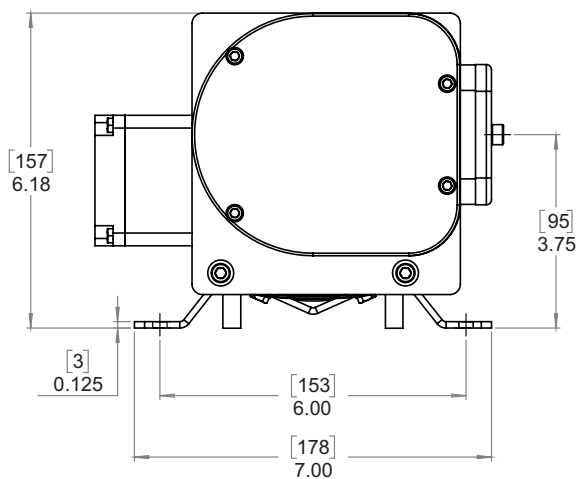
Estimated Pumping Capacity						
Tubing Size	1.6mm bore (1/16")	3.2mm bore (1/8")	4.8mm bore (3/16")	6.4mm bore (1/4")	8mm bore (5/16")	9.6mm bore (3/8")
ml/min @48 rpm	19 (0.3 gph)	82 (1.3 gph)	197 (3.1 gph)	312 (4.9 gph)	518 (8.2 gph)	653 (10.3 gph)
ml/rev	0.4	1.7	4.1	6.5	10.8	13.6

*Actual flow rates may vary

AGENCY APPROVALS



DIMENSIONS



[mm]
in

FLOMOTION SYSTEMS Inc.

3 North Main St.
Middleport, NY 14105
Tel: 716-691-3941
Fax: 716-691-1253
Email: info@flomotionsystems.com
www.flomotionsystems.com

