

# CHECK VALVE

## SIGMAMOTOR

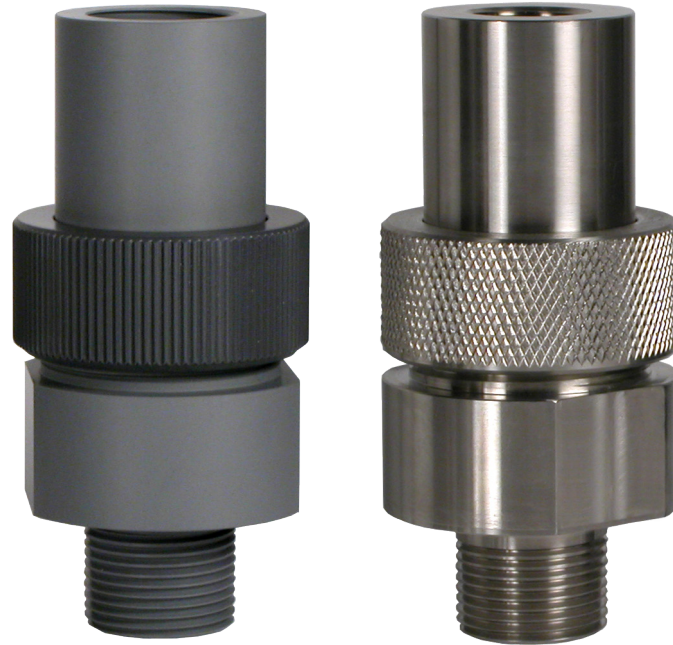
Protects against back-flow of fluids



SIGMAMOTOR Check Valves provide reliable protection against back-flow of fluids in a chemical feed system. Check Valves are available in a wide variety of materials and sizes.

The integral spring loaded check valve prevents back-flow from the pressurized pipe if there is a break in the discharge piping.

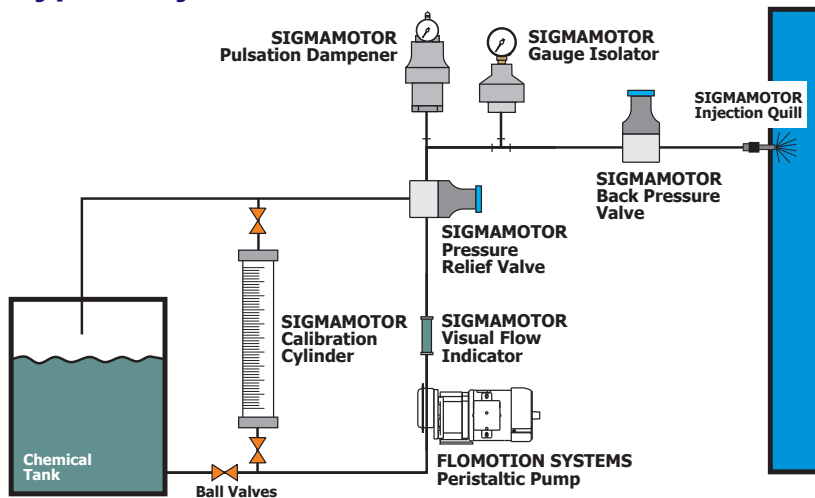
A union connection on the inlet allows for ease of installation and maintenance of the replaceable ball and o-ring.



### Features

- CNC precision machined parts
- Disassembles for service
- Body Material - PVC, CPVC, Polypropylene, Kynar® PVDF, PTFE, 316SS, A20, Hastelloy C276
- O-Ring Material - Viton or EPDM

### Typical System



**CHEMICAL FEED ACCESSORIES**

CV:    -    -    -    -     
           1      2      3      4      5

Example: CV-N-500-P-V-M

INLET CONNECTION TYPE <b>1</b>	
NPT	N
SOCKET	S

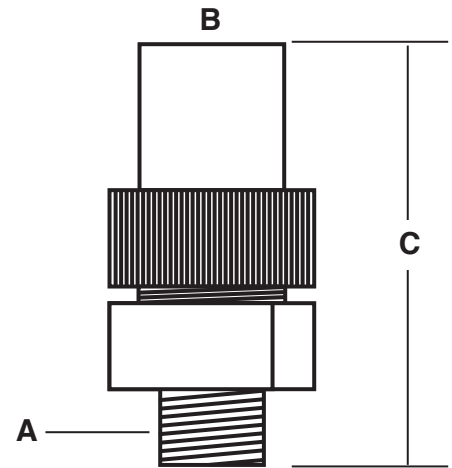
SIZE <b>2</b>			
SELECT:	500	750	100
SIZE (in)	1/2	3/4	1
A-Process Connection - MNPT (in)	1/2	3/4	1
B-Inlet - FNPT (in)	1/2	3/4	1
C-Length (in)	4.25	4.25	5.0

VALVE MATERIAL with PTFE and HC spring <b>3</b>	
PVC	P
POLYPROPYLENE	PP
CPVC	CP
PTFE	T
Kynar® PVDF	K
316 SS	S
ALLOY 20	A
HASTELLOY C276	H

O-RING MATERIAL <b>4</b>	
VITON	V
EPDM	E

OPTIONS <b>5</b>	
FNPT (Standard)	
INLET MALE NPT	M
316 SS	S

**DIMENSIONS**



Material:	PVC	CPVC	PP	PVDF	PTFE	METAL
Maximum Pressure:	150 psi	150 psi	150 psi	150 psi	150 psi	350 psi
Maximum Temperature:	140 °F	195 °F	195 °F	285 °F	480 °F	300 °F

FLOMOTION SYSTEMS Inc.  
 3 North Main St.  
 Middleport, NY 14105  
 Tel: 716-691-3941  
 Fax: 716-691-1253  
 Email: info@flomotionsystems.com  
 www.flomotionsystems.com

