

MS1000

ISOMAG 



FLOMOTION
SYSTEMS

ELECTROMAGNETIC FLOWMETERS

Reliable full-pipe flow measurement with high accuracy,
ease of installation and low operating cost



The MS1000 is available with Polypropylene, Ebonite or PTFE liner and local or remote mounted converter.



The MS1000 conforms to the requirements of NSF/ANSI Standard 61 for for 1/2" to 80" sensors!

TYPICAL APPLICATIONS

- Water
- Polymers
- Wastewater
- Lime Slurries
- Dyes
- Process Chemicals
- Brine
- Caustics
- Slurries
- Acids
- Starches
- Paper Stock
- Concrete

MS100 FEATURES

- Accuracy to $\pm 0.2\%$ of rate from 1 to 33 ft/sec.
- Lower cost than flanged units.
- Twelve sizes from 1/2" to 16" Pipe Diameters.
- Flow ranges from 0.85 to 19,934 GPM.
- Pressure: 580 PSI. (PTFE Liner)
- Volumetric flow rate measurement independent of fluid viscosity, density and temperature.
- No moving parts for zero maintenance.
- Bi-directional flow measurement.
- No pressure drop through sensor.
- Standard integral ground electrode.
- Minimal straight pipe run required.
- Every sensor is factory wet-calibrated.



The MS1000 shown with new optional PTFE liner and stainless steel body.

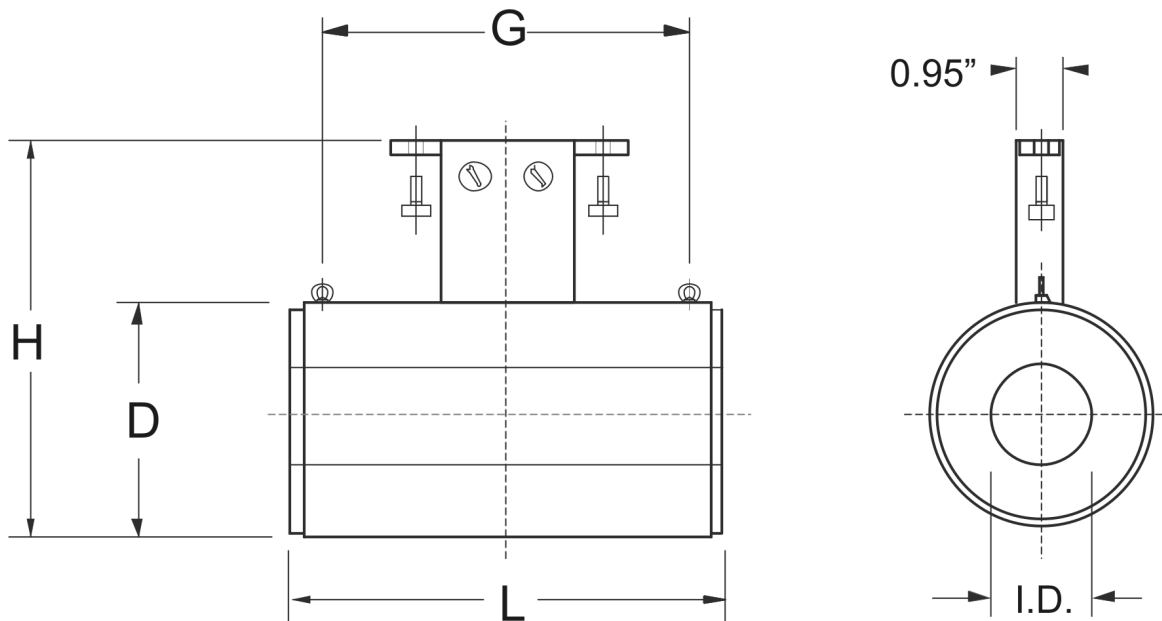
ELECTROMAGNETIC FLOWMETER

FLOMOTION MS1000 ENGINEERING SPECIFICATIONS

- Accuracy: See relevant converter data sheet
- Repeatability: $\pm 0.1\%$
- Temperature (Liquid)
 - +32 to 140°F (PP)
 - +23 to 175°F (Ebonite)
 - 4 to 212°F (PTFE Compact)
 - 4 to 302°F (PTFE Remote)
- Pressure:
 - PP or Ebonite Liner: 230 PSI (Std.)
 - PTFE Liner: 230 PSI (Std.)
 - PTFE Liner: 580 PSI (optional, up to 6" Diameter)
- Liner Material: PTFE, Ebonite or Polypropylene
- Flow Tube: 304 S.S.
- Body Material: Carbon steel with two-part epoxy coating (S.S. optional)
- Electrode Material: 316 S.S.*
- Number of Electrodes: 3
- Environmental Rating: NEMA 6
- Fluid Conductivity: 5 $\mu\text{S}/\text{cm}$ (min)
- Connections: Wafer tightened between flanges

AVAILABLE SIZES AND DIMENSIONS

I.D Size (in.)	1	1-1/2	2	3	4	6	8	10	12	14	16
Min Flow Rate (gpm @ 1 ft/sec)	2.4	6.08	9.49	24.30	37.97	85.44	151.9	341.8	237.3	465.2	607.6
Max Flow Rate (gpm @ 33 ft/sec)	77.9	199.3	311.5	797.4	1246	2803	4984	7787	11,213	15,262	19,934
Length (L below)	3.94	3.94	3.94	5.91	5.91	7.09	7.87	9.84	11.81	13.78	15.75
Height (H below)	5.79	6.34	6.97	8.23	9.25	11.46	14.25	16.42	18.39	20.75	22.80
Outside Dia. - (D below)	2.21	2.76	3.39	4.65	5.67	7.87	10.67	12.84	14.80	17.17	19.21
Lift Ring Distance - (G below)	-	-	-	-	-	-	5.67	7.64	9.61	11.58	13.54
Weight (lbs.)	2.7	4.0	4.4	8.4	11.0	18.1	40.1	52.9	59.5	70.6	86.0



FLOMOTION SYSTEMS Inc.

3 North Main St.
 Middleport, NY 14105
 Tel: 716-691-3941
 Fax: 716-691-1253
 Email: info@flomotionsystems.com
www.flomotionsystems.com

