

# ProCon® — C750 Series Conductivity Sensor Transmitter



- ✓ Eliminate Costly Conductivity Module
- ✓ Direct 4-20mA & RS485 Outputs
- ✓ Temperature Compensated
- ✓ High Accuracy
- ✓ 2" NPT Connection
- ✓ Factory Calibrated
- ✓ Toroidal Measurement
- ✓ Conductivity | TDS | Salinity | Resistivity

## Introducing a toroidal conductivity sensor for when you need extreme range.

The ProCon® C750 series toroidal (inductive) conductivity sensors provide a broad measuring range and reliable toroidal technology spanning the range 0-2000 ms/cm.

The C750 series is built for a trouble-free and extended service life, and is resistant to corrosion, coatings, and fouling that are typical of contacting conductivity sensors. The standard PFA Teflon® body material and Viton o-ring offers excellent chemical resistance.

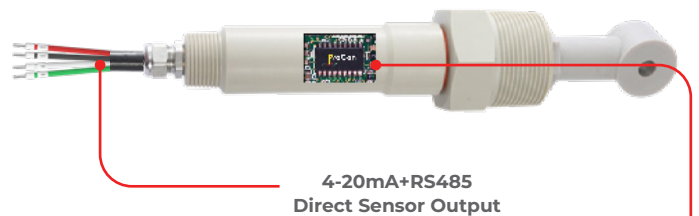
The C750 series models are equipped with 2" MNPT for submersion installation. Built into the sensor is a PT1000 RTD temperature element.

The ProCon® line of analytical sensors have been designed for difficult industrial applications and to outperform even in extreme conditions.

The 2-wire 4-20mA, 4-wire or 4-20mA + RS485 output options simplify calibration and communication with remote displays and controllers.

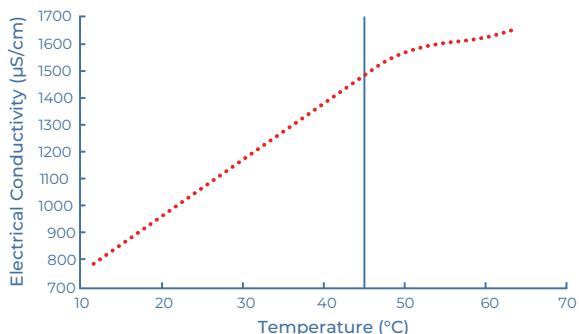
## Specifications

Power Supply	9 – 36VDC
Sensor Electrode Material	PFA Teflon®   PP
Housing Material	PFA
IP Rating	IP68
Measurement Range	0 – 2,000mS/cm
Accuracy	±0.01% F.S
Pressure Resistance	150 Psi
Temperature Compensation	PT1000 (Std)   PT100
Temperature Range	-4 – 266°F   -20 – 130°C
Calibration	Factory Calibrated
Communication Method	• 4-wire (direct to ProCon® controller) • 4-20mA + RS485
Cable Length	Flying Lead: 5m cable can be extended to 100m
Installation Thread	NPT 2"
Measurement Technology	Inductive

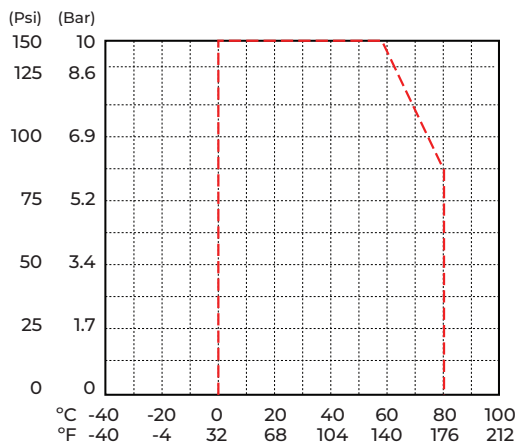


Advanced electronic circuitry for automatic sensor recognition ensuring trouble-free calibration when connected to the ProCon® controller

### Temperature Effects

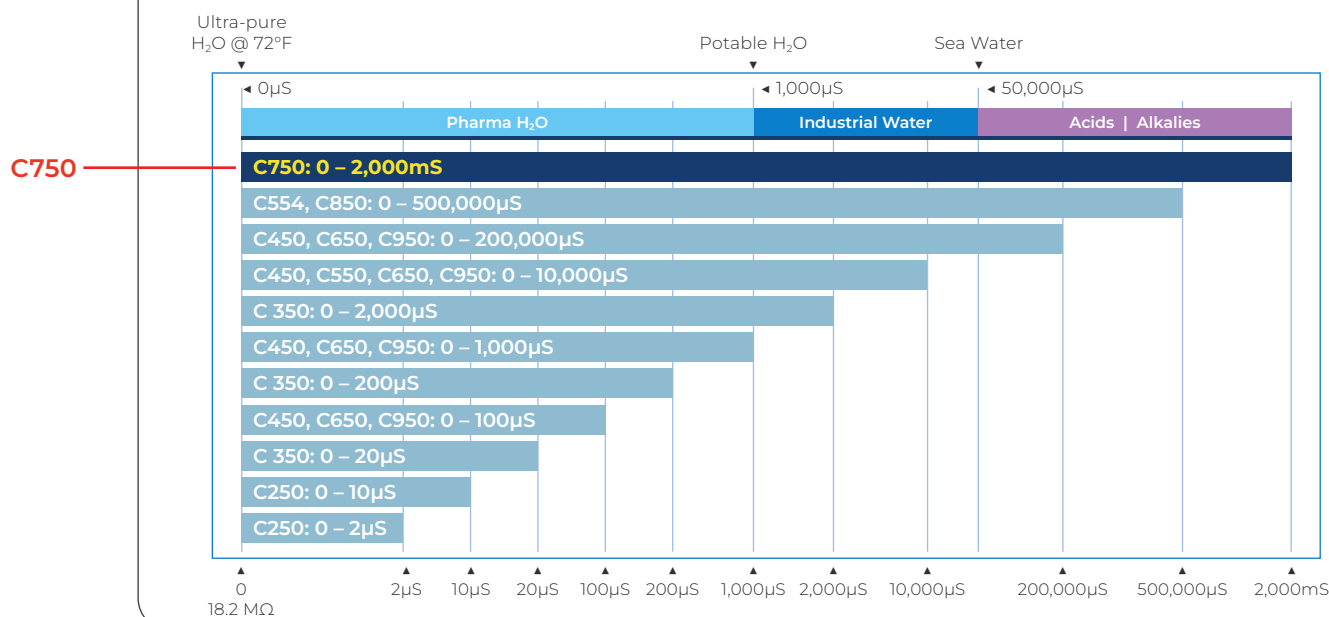


### Temperature vs. Pressure



### Factory Calibrated

ProCon® conductivity sensors come with a factory default that covers the range of the sensor



### Industrial GP Purpose

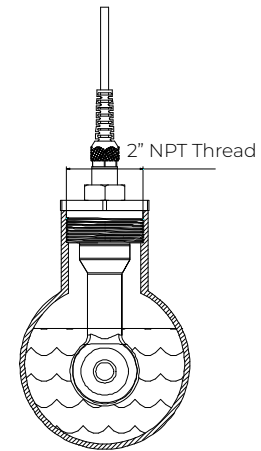
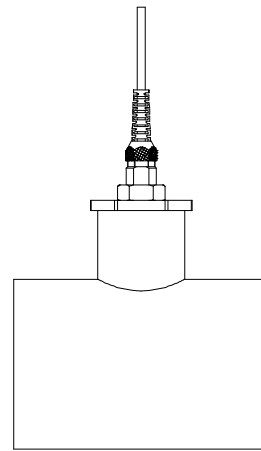
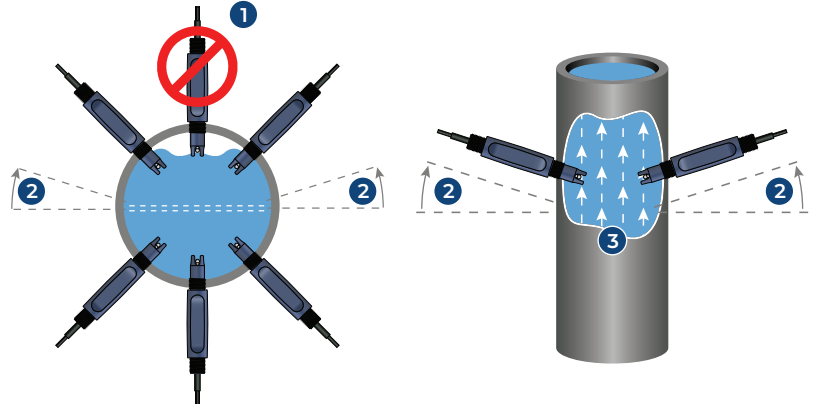
Cell	Models	Range
Cell 0.1	C250	0 - 2 µS
Cell 0.1	C250	0 - 10 µS
Cell 0.1	C350	0 - 20 µS
Cell 0.01	C450, C650, C950	0 - 100 µS
Cell 0.1	C350	0 - 200 µS
Cell 0.1	C450, C650, C950	0 - 1,000 µS
Cell 0.1	C350	0 - 2,000 µS
Cell 1.0	C450, C550, C650, C950	0 - 10,000 µS
Cell 10	C450, C650, C950	0 - 200,000 µS
Cell 0.4	C554, C850	0 - 500,000 µS
<b>Toroidal</b>	<b>C750</b>	<b>0 - 2,000 mS</b>

### Typical Applications

- ✓ Water Treatment
- ✓ Pharmaceutical
- ✓ Food and Beverage
- ✓ Interface Detection
- ✓ Desalination
- ✓ Chemical Plants
- ✓ Aquariums
- ✓ Agricultural Industries

## In-line Mounting

1. If air is present, avoid vertical installation (okay if pipe is full).
2. Optimum installation 15° above horizontal.
3. Process liquid should flow upward. (for downward flow ensure backpressure is present in order to avoid air within pipe)



## Model Selection (Controller Included)

C750 — Toroidal Conductivity Sensor

Part Number	Material	Output	Cell Constant	Range	Connection
C750-T-D-1-F	PP	4-wire (for ProCon® Display)	Toroidal	0-2,000mS	Flying Lead