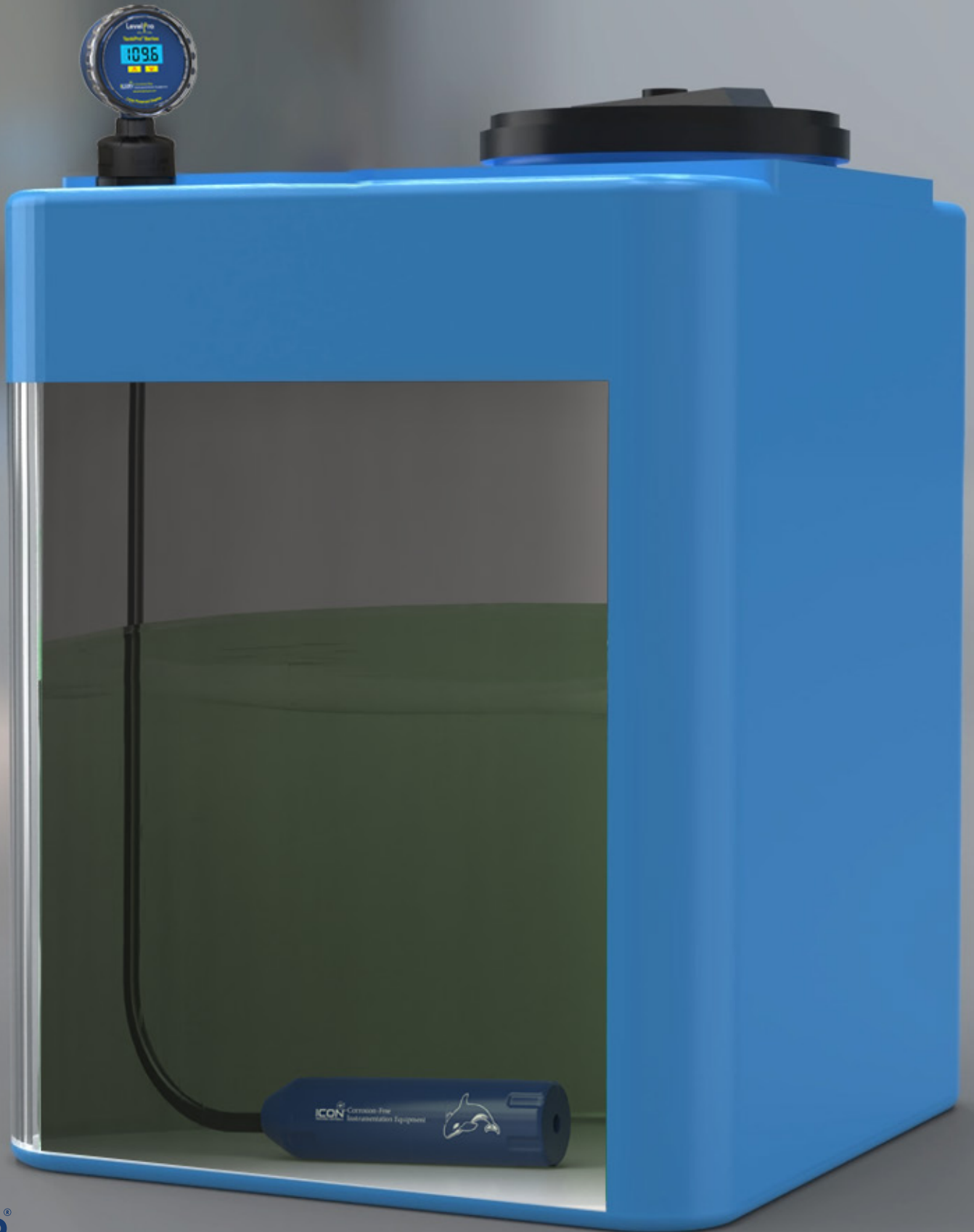


# LevelPro® — TankPro® Series Submersible Level Sensor Transmitter

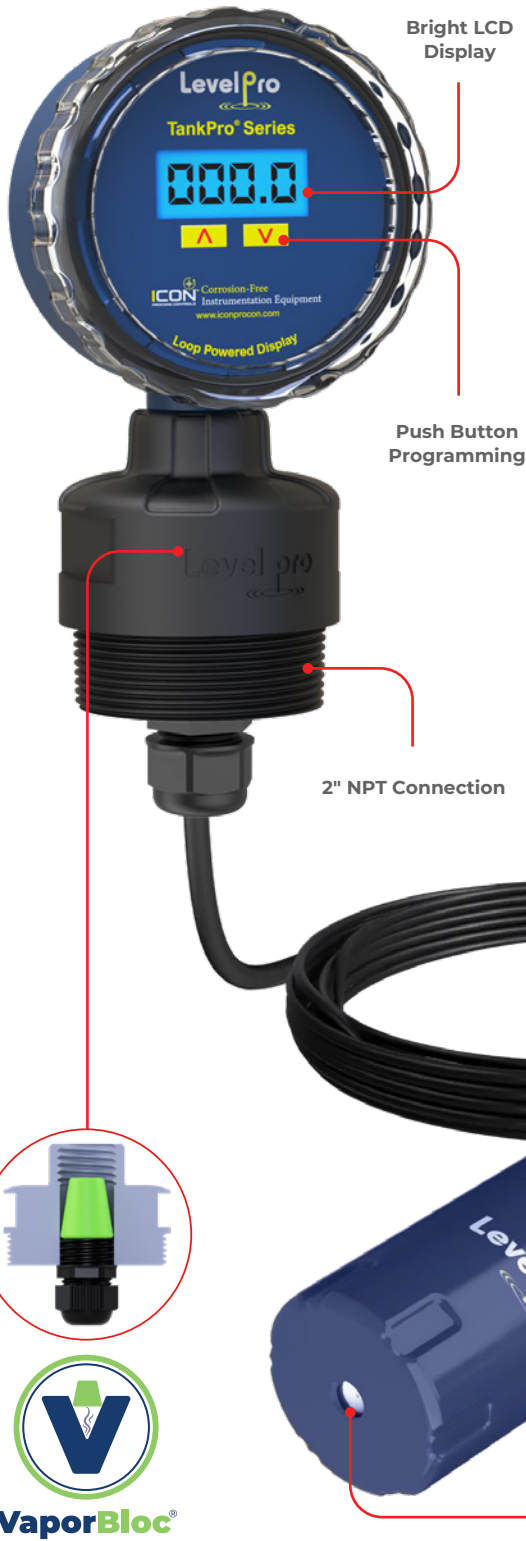
**ICON**™ Corrosion-Free  
PROCESS CONTROLS Instrumentation Equipment



LevelPro®

# LevelPro® — TankPro® Series

## Submersible Level Sensor Transmitter



### Features

- ✓ Higher Accuracy:  $\pm 0.5\%$
- ✓ Superior Chemical/Corrosion Resistance
- ✓ PVC | PP | PVDF | 316 SS | PTFE Teflon®
- ✓ Teflon® Jacketed Cable
- ✓ Kalrez® O-Ring Seal
- ✓ 14ft Measuring Range
- ✓ 4-20mA Loop Powered
- ✓ Works on Foam | Vapor | Turbulence | Condensate
- ✓ Integrally Molded Internal Weight | No Floating
- ✓ IP68 | NEMA 4X Enclosure

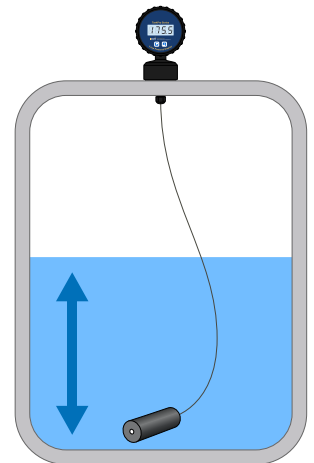
### The Solution to Tough Applications Where Ultrasonic Sensors Simply DO NOT WORK!

The TankPro® Submersible Level Transmitter provides continuous level measurement for both corrosive and non-corrosive liquids. These submersible hydrostatic transmitters have been designed for the toughest industrial applications. Unlike ultrasonic level transmitters, our liquid level sensors are completely unaffected by any foam, vapor, turbulence or condensate in the tank.

The TankPro® Level Transmitter comes equipped with a local LCD display that mounts the top of the tank with a 1" or 2" NPT connection.

The TankPro® Series comes in PVC, PP, PVDF, PTFE Teflon® or 316 SS making them the perfect level sensor for your chemical tank application.

Accurate level reading by measuring the head pressure of the liquid pushing down on ceramic sensing diaphragm.



### VaporBloc® Technology

- ✓ Blocks Out Corrosive Chemical Fumes
- ✓ Pressure Tested to 75 psi
- ✓ Protects Internal Wiring Connections



# LevelPro® — TankPro® Series

## Submersible Level Sensor Transmitter



### Specifications

Input Pressure Range										
Level ft/H <sub>2</sub> O	14 *Consult Factory for Levels > 14 ft									
Overpressure   Psi	210   290   290   380									
Output Signal   Supply										
Output Signal	4-20mA									
Power Supply	9-36 VDC   Loop Powered									
Performance										
Accuracy	<±0.5% of FS									
Permissible Load	$R_{max} = [(V_s - V_{smin}) / 0.02 A] \Omega$									
Influence Effects	Supply: 0.05% Full Scale/10V   Load: 0.05% Full Scale/K $\Omega$									
Long Term Stability	<± 0.1% Full Scale over One Year									
Response Time	<10 msec									
Permissible Temperatures										
Storage/Media Temperatures	PVC :	32 to 140°F	PP :	-20 to 170°F	PVDF :	-40 to 170°F	PTFE :	-40 to 170°F	316 SS :	-40 to 170°F
		0 to 60°C		-28 to 76°C		-40 to 76°C		-40 to 76°C		-40 to 76°C
Thermal Effects   Offset and Span										
Thermal Drift	<± 0.02% FSO/K in Compensated Range   -20 to 170°F									
Display										
LCD										
Materials   Wetted										
Housing	PVC   PP   PVDF   PTFE   316 SS									
Seal	FFKM - Kalrez®									
Diaphragm	Pure Ceramic 96% Al <sub>2</sub> O <sub>3</sub>   316 SS									
Electrical Protection										
Short-Circuit Protection	Permanent									
Reverse Polarity Protection	No Damage to Sensor									
Electromagnetic Compatibility	Emission Immunity According to EN 61326									
Electrical Connection										
Jacketed Cable	PTFE   Teflon -40 – 200°F									
3-Wire Cable with Integrated Air Tube for Reference to Atmospheric Pressure										
General (Sensor Only)										
Current Consumption	Max. 25mA									
Weight   Grams	PVC   575g   PP   475g   PVDF   825g   PTFE 875g   316 SS   875g									
Ingress Protection	IP 68   NEMA 4X									
CE-Conformity	EMC Directive: 2004   108   EC									

\*Contact Factory for different options

### Model Selection

TankPro® — Submersible Level Sensor + Display		
Part Number	Material	Output
191-1001-A113302F	PVC	1 Relay + 4-20mA
191-1001-B113302F	PP	1 Relay + 4-20mA
191-1001-E113302F	PVDF	1 Relay + 4-20mA
191-1001-SS113302F	316 SS	1 Relay + 4-20mA

### Wiring

24VDC	Color
Supply +	Red
Supply -	Black

