

PLASTIC LABORATORY pH ELECTRODES

PRODUCT SPECIFICATION SHEET



Choose basic, advanced, or premium options based on your application

Virtually unbreakable with durable polycarbonate or Ultem® bodies

Compatible with any meter accepting a BNC

Accurate and reliable measurements across full pH scale (0-14)

Instantly ready for use: Extended shelf life (guaranteed for one year)

One year limited warranty

The right sensor makes the difference.

Choosing a sensor that is well-suited for your application will improve measurement accuracy and extend sensor lifetime. Select from basic, advanced, and research grade pH sensors to find the option that meets your application needs.

pH1000 Series (Basic): The pH1000 polycarbonate pH sensor is easy to use and stands up to the usual wear and tear. This sensor performs reliably in environments such as swimming pools and hydroponics.

pH2000 Series (Advanced): The pH2000 series of Ultem® pH sensors offers enhanced chemical compatibility. Great for testing samples with unknown composition, such as wastewater, these sensors feature double junction reference protection and operate at temperatures up to 80°C.

pH3000 Series (Research Grade): Our pH3000 series Ultem® pH electrodes are designed for maximum accuracy and sensor lifetime. These research grade probes stand up to aggressive chemicals and temperatures up to 100°C. The refillable design is excellent for precision measurements, even in low ionic samples.

**pH1000
Basic**



**pH2000
Advanced (Classic Bulb)**



**pH2100
Advanced (Flat Tip)**



**pH2200
Advanced (Spear Tip)**



**pH3000
Research Grade**

*Ultem is a registered trademark of General Electric Company. No affiliation, endorsement or sponsorship is stated or implied.

DESIGNED AND ASSEMBLED IN CALIFORNIA, USA

11751 MARKON DRIVE • GARDEN GROVE, CA 92841 • 714.895.4344 • WWW.SENSOREX.COM

© Sensorex Corporation. All rights reserved. In the interest of improving and updating its equipment, Sensorex reserves the right to alter specifications to equipment at any time.

SPECIFICATIONS

BASIC

pH1000

Diameter	12mm
Length	150mm
Reference	Sealed
Junction Number	Single (1)
Junction Material	Pellon
Reference Solution	3.5 M KCl/AgCl (gel)
Glass Shape	Bulb
Body Material	Polycarbonate
Temperature Range	0-60 degrees C
Strain Relief	No
BNC Boot	No
Bulb Protection	Slots

UNIVERSAL

All Plastic Laboratory pH Electrodes

pH Range	0-14 (Na+ error at 12.3 < pH)
Response	95% in 1 second (bulb glass shape) 95% in 5 seconds (flat glass shape) 90% < in 5-7 seconds (spear glass shape)
Isopotential Point	7.00 pH (0 mV)
Offset	± 0.20 pH
Span	97% of theoretical or higher
Connector	BNC (Standard Configuration)
Cable Length	1 meter (Standard Configuration)

ADVANCED

pH2000

Diameter	12mm
Length	150mm
Reference	Sealed
Junction Number	Double (2)
Junction Material	Pellon
Reference Solution	3.5 M KCl/AgCl/KNO ₃ (gel)
Glass Shape	Bulb
Body Material	Ultem®
Temperature Range	0-80 degrees C
Strain Relief	No
BNC Boot	Yes
Bulb Protection	Teeth

pH2100

Diameter	12mm
Length	150mm
Reference	Sealed
Junction Number	Double (2)
Junction Material	HDPE and Pellon
Reference Solution	3.5 M KCl/AgCl/ KNO ₃ (gel)
Glass Shape	Flat
Body Material	Ultem®
Temperature Range	0-80 degrees C
Strain Relief	No
BNC Boot	Yes

pH2200

Diameter	12mm
Length	150mm
Reference	Sealed
Junction Number	Double (2)
Junction Material	Kynar and Pellon
Reference Solution	3.5 M KCl/AgCl/ KNO ₃ (gel)
Glass Shape	Spear
Body Material	Ultem®
Temperature Range	0-80 degrees C
Strain Relief	No
BNC Boot	Yes

RESEARCH GRADE

pH3000

Diameter	12mm
Length	150mm
Reference	Refillable
Junction Number	Double (2)
Junction Material	Ground Epoxy and pHASE
Reference Solution	3.5 M KCl (liquid)
Glass Shape	Bulb
Body Material	Ultem®
Temperature Range	0-100 degrees C
Strain Relief	Yes
BNC Boot	Yes
Bulb Protection	Removable Guard

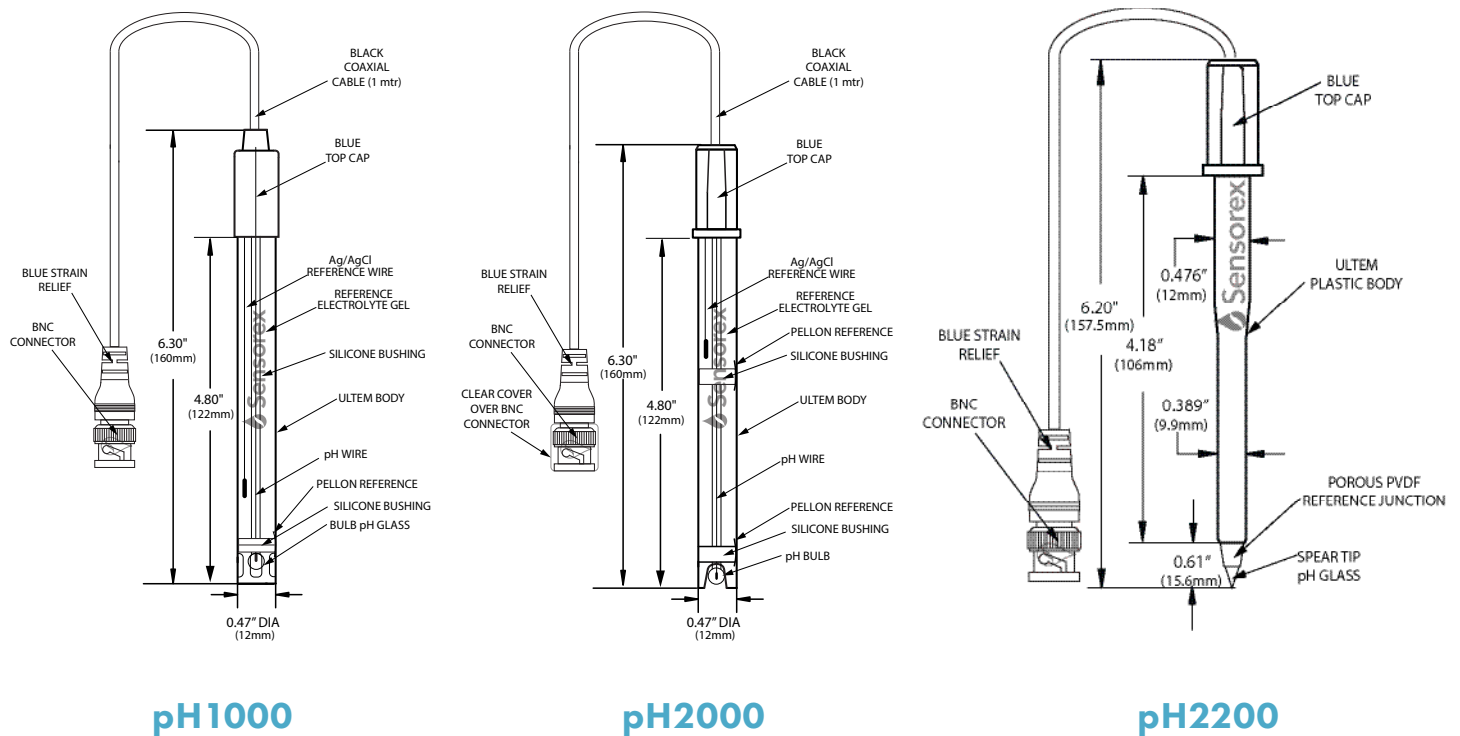
*Ultem is a registered trademark of General Electric Company. No affiliation, endorsement or sponsorship is stated or implied.

DESIGNED AND ASSEMBLED IN CALIFORNIA, USA

11751 MARKON DRIVE • GARDEN GROVE, CA 92841 • 714.895.4344 • WWW.SENSOREX.COM

© Sensorex Corporation. All rights reserved. In the interest of improving and updating its equipment, Sensorex reserves the right to alter specifications to equipment at any time.

OUTLINES AND DIMENSIONS



ORDERING INFORMATION

Part Number	Description
pH1000	Single junction, sealed polycarbonate pH electrode
pH2000	Double junction, sealed Ultem® pH electrode
pH2200	Double junction, sealed Ultem® pH electrode with spear tip for food and soil applications

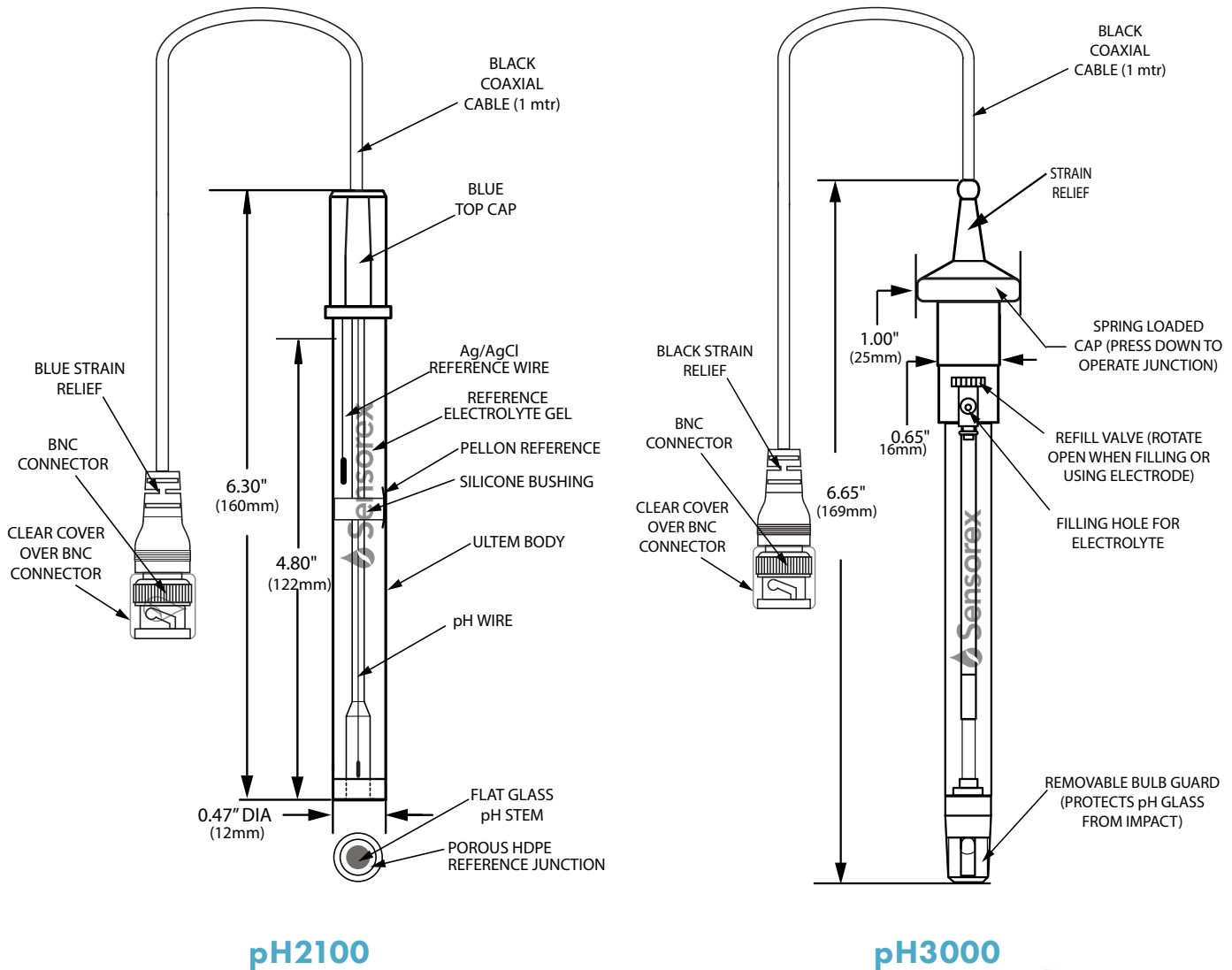
*Ultem is a registered trademark of General Electric Company. No affiliation, endorsement or sponsorship is stated or implied.

DESIGNED AND ASSEMBLED IN CALIFORNIA, USA

11751 MARKON DRIVE • GARDEN GROVE, CA 92841 • 714.895.4344 • WWW.SENSOREX.COM

© Sensorex Corporation. All rights reserved. In the interest of improving and updating its equipment, Sensorex reserves the right to alter specifications to equipment at any time.

OUTLINES AND DIMENSIONS



233 Technology Way Suite 9, Rocklin, CA 95765, United States of America
 csd@cannonwater.com +1-916-315-2691

ORDERING INFORMATION

Part Number Description

pH2100	Double junction, sealed Ultem® pH electrode with flat measurement surface for specialty applications
pH3000	High accuracy, research grade double junction refillable Ultem® pH electrode

*Ultem is a registered trademark of General Electric Company. No affiliation, endorsement or sponsorship is stated or implied.

DESIGNED AND ASSEMBLED IN CALIFORNIA, USA

11751 MARKON DRIVE • GARDEN GROVE, CA 92841 • 714.895.4344 • WWW.SENSOREX.COM

© Sensorex Corporation. All rights reserved. In the interest of improving and updating its equipment, Sensorex reserves the right to alter specifications to equipment at any time.